



الهدف لتجارة أجهزة تنقية المياه (ش.ذ.م.م)
TARGET Water Purification Equipment Trading L.L.C.





الهدف لتجارة أجهزة تنقية المياه (ش.ذ.م.م)
TARGET Water Purification Equipment Trading L.L.C.



PRODUCT CATALOGUE

Index

Products	4
Commercial & Industrial Ro System (Operational Diagram)	5
Projects	6-7
Commercial & Industrial Ro System 800-5000 Gpd	8
Multi-media Filtration Systems	9
Softener Systems	10
Distribute Spacing:	11
Chemicals	12
Membranes	13
Pumps	14
Dosing Pumps	15
Pressure Vessels	16
Frp Vessels	17
Automatic & Manual Valves	18
Instruments	19-20
SST & UPVC Clusters	21
Media & Ultra Violet System	22
Frp Tank Distribution System	23
Residential Ro System	24-26
Water Purifier & Dispenser	27-28
Water Filtration	29
Cartridges	30
Spare Parts	31-32

Company Profile

Target water purification equipment trad. is established in the United Arab Emirates, since 1997. We are one of the best companies in the Emirates to offer Water Treatment Services.

While the Managing Director is Mr. Marwan Jammoul, the day to day Operations of Target is handled by the General Manager, Mr. Amer Jammoul, B.S.(Chemical Engineering).

The various divisions are managed by dedicated experts well versed in all aspects of techniques engineers supported by excellent professional sales of highly qualified Engineers and Technicians to provide best quality products, and plants with guarantee of maintenance services through our service staff, whenever required. The Company holds sole agencies of numerous internationally recognized manufacturers and an extensive inventory of their products that always available ex-stock.

Target water purification equipment trad. employs over 32 persons in the United Arab Emirates and it's activities are as follows:

Water treatment, Chemicals & Equipment Divisions:

Water Treatment Division - Engineering & Services: This division handles the land based Water Treatment business like Water Treatment Chemicals, UV Disinfection Systems, Softners and Filters, Ion Exchange Resins, Industrial Filters, Dosing Pumps and Accessories, wide variety of Gravel and Sands, Activated Carbons, Industrial Salt Chemicals, R.O. Plants, Water Bottling, Water recycling, Grey Water recycling, Water Testing Equipments and Chemicals.

Chemical Trading Division: We are one of the largest stocks in United Arab Emirates of Chemicals like Caustic Soda, Soda Ash, Solvents, hydrochloric acid, and others.

Swimming Pools Division handles Swimming Pool Filters, Pumps, Fittings, Brushes, and Nets etc. Large Stocks of Swimming Pool filter media like graded sand; Anthracite, etc are always in Stock with us.

More over, we also directly import from manufacturers and stock Calcium Hypochlorite and other Chlorine like SDIC and TICA. In short we are the shopping centre for Swimming Pool maintenance, products & systems here in U.A.E, Middle East & African Countries.

Workshop Facilities:

Our Service Centre in Dubai is considered to be one of the biggest workshop in UAE. It is equipped with the latest, most up-to-date plant and equipment and is managed by professionals with a wealth of experience.

Warehouses:

A Large central store is operation in the Industrial Area of Al Qusais for quicker delivery to customers in all the Emirates.

Target Water Purification

Water Pioneers is one of the leading Providers of water treatment systems. Our aim is to solve all kind of water problems of our customers and suggest best solutions. We design and supply all desalination Reverse Osmosis systems. We are capable of undertaking the basic engineering, detail engineering, supply of equipments, operation and maintenance of all water treatment projects. We supply the following water treatment systems:

Reverse Osmosis



Chemicals



Central Cooling



Central Cooling



Filtration



Commercial & Industrial RO System

Reverse Osmosis (RO) is a water treatment process in which Water is forced through a semi-permeable membrane that has very small pores.

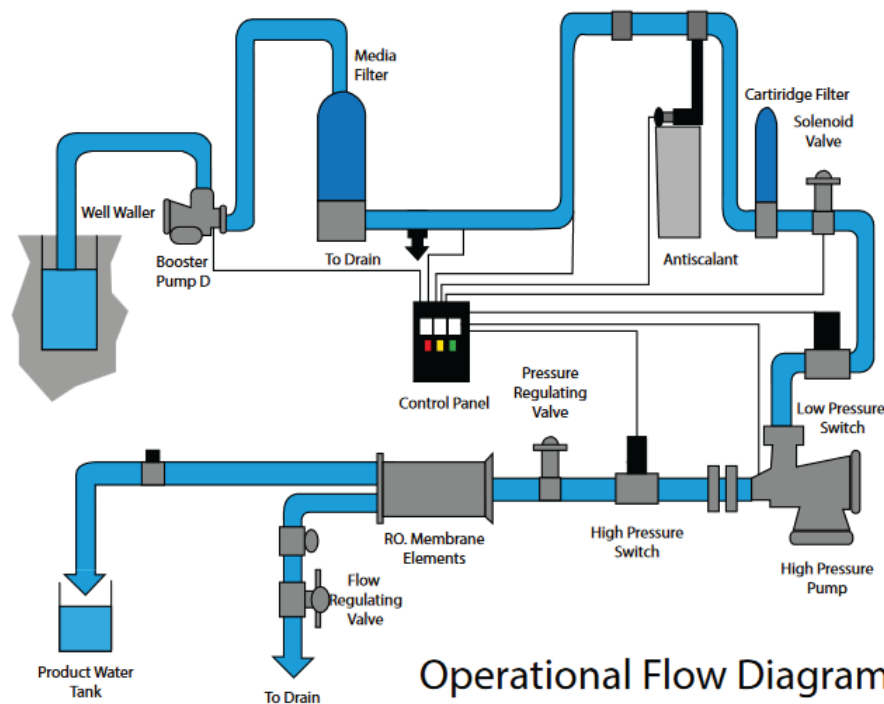
Clean water passes through and impurities that are too big to pass through the membrane are left behind and flushed away.

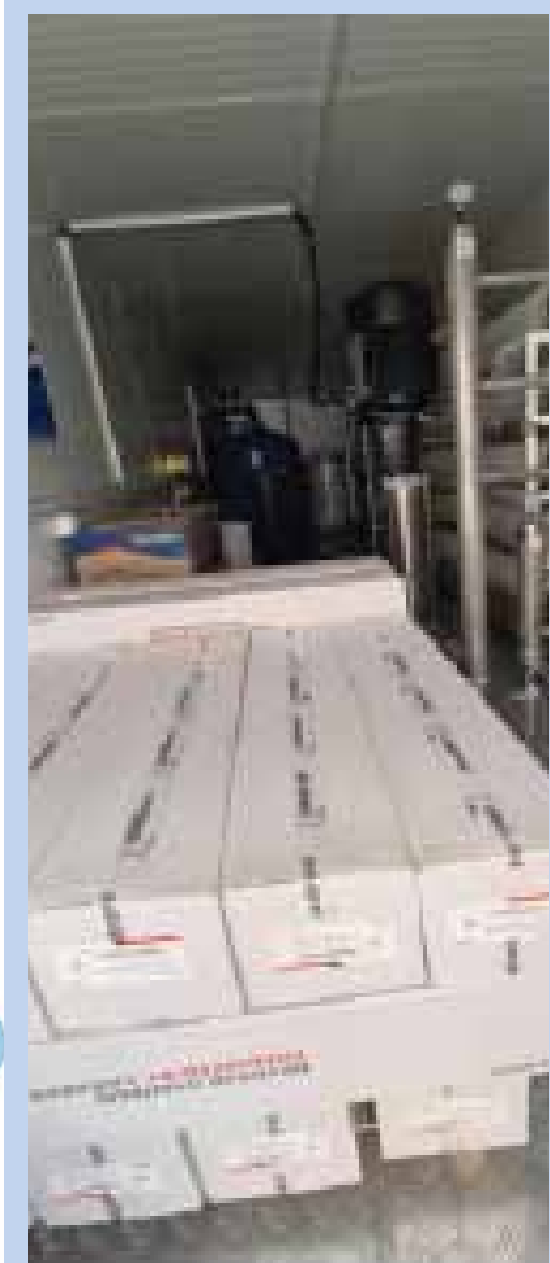
Reverse osmosis uses a semi-permeable, allowing pure water to pass through it, while rejecting the contaminants membrane. Quality reverse osmosis systems use a process known as cross flow to allow the membrane to continually clean itself.

As some of the passes through the membrane the rest continues downstream, sweeping the rejected contaminants away from the requires a driving force to push the fluid through the membrane (the pressure provided by a standard residential water systems is 40psi)

Reverse Osmosis can remove dissolved solids, Treated water will not produce scale in kettles and coffee makers because sodium and potassium are salts, minerals tha cause hardness, organic chemicals and other impurities. It can improve the taste of water removed.

Treated water will not produce scale in kettles and coffee makers because sodium and potassium are removed.





Project



Commercial & Industrial RO System



Multi-Media Filtration System

Water Filters are devices that can improve the overall taste, smell and appearance of drinking water and can remove some chemical substances. Also it removes impurities from tap water.

Type of water filters

- Multimedia filters
- Activated carbon filters

Constituents of Filtration System

- Top Brand Controller
- Filter Vessels are available in GRP
- Filters effectively up to 5 micron
- Remove suspended solids, turbidity, iron, taste, color & odor.
- Available all types of filtration media like carbon, gravel & sand.



Water softening is the removal of calcium, magnesium, and certain other metal cations in hard water. The resulting soft water is more compatible with soap and extends the lifetime of plumbing. Water softening is usually achieved using lime softening or ion-exchange resins.

Hard water leads to the buildup of lime scale, which can foul plumbing, and promote galvanic corrosion.[2] In industrial scale water softening plants, the effluent flow from the re-generation process can precipitate scale that can interfere with sewage systems

The slippery feeling experienced when using soap with soft water occurs because soaps tend to bind to fats in the surface layers of skin, making soap molecules difficult to remove by simple dilution. In contrast, in hard-water areas the rinse water contains calcium or magnesium ions which form insoluble salts, effectively removing the residual soap from the skin but potentially leaving a coating of insoluble stearates on tub and shower surfaces, commonly called soap scum.[3]

Which of these effects is considered more or less desirable varies from person to person, and those who dislike the sliminess and difficulty of washing off soap caused by soft water may harden the water by adding chemicals such as baking soda, calcium chloride or magnesium sulphate



Ultra Violet Systems

All range of UV system to remove bacteria, algae & harmful micro-organisms. Suitable for drinking water treatment at point of use.



Central Cooling Systems

Liquid is pumped through a circulation coil, absorbing heat become low temperature and then come back to the tank.



We recognize the importance of accurate, reliable chemical feed to the success of your water chemical treatment programs. Proper application of our chemical products can significantly improve the efficiency of your operation. We offer pre-packaged chemical feed systems that incorporate necessary components assuring easy installation, start up and reliable chemical feed.

High performance industrial and process water treatment additives have been specifically formulated for the effective treatment of boilers, cooling towers and cooling water systems.

Cooling Water Treatment

- Antiscalant
- Biocides
- Corrosion Inhibitors

Boiler Water Treatment

- Corrosion Inhibitors
- Oxygen Scavengers
- Ph Adjustments
- Scale Inhibitors



Membranes

A membrane is a selective barrier; it allows some things to pass through but stops others. Such things may be molecules, ions, or other small particles. Synthetic membranes are made by humans for use in laboratories and industry (such as chemical plants). The influence of an artificial membrane is known as the feed-stream, the liquid that passes through the membrane is known as the permeate, and the liquid containing the retained constituents is the retentate or concentrate.



Pumps

Are device that moves fluids (liquids or gases), or sometimes slurries, by mechanical action, typically converted from electrical energy into hydraulic energy. Pumps can be classified into three major groups according to the method they use to move the fluid: direct lift, displacement, and gravity pumps.

Pumps operate by some mechanism (typically reciprocating or rotary), and consume energy to perform mechanical work moving the fluid. Pumps operate via many energy sources, including manual operation, electricity, engines, or wind power, and come in many sizes, from microscopic for use in medical applications, to large industrial pumps.

Mechanical pumps serve in a wide range of applications such as pumping water from wells, aquarium filtering, pond filtering and aeration, in the car industry for water-cooling and fuel injection, in the energy industry for pumping oil and natural gas or for operating cooling towers and other components of heating, ventilation and air conditioning systems. In the medical industry, pumps are used for biochemical processes in developing and manufacturing medicine, and as artificial replacements for body parts, in particular the artificial heart and penile prosthesis.

GRUNDFOS 

 **Hardy**
Pompe

PRAKASH

Danfoss



HYDRA BL ELECTROMAGNETIC DOSING PUMPS



Main characteristics

- Analogue electromagnetic dosing pump with constant dosing, manually adjustable by control knob on the front panel. 2 flow rate range: 0÷20% with switch in " P" position, 0÷100% with switch in " C" position, Internal Microswitch, Power-on led indicator and level probe predisposition
- PVDF-C * pump head
- Ceramic balls reliability of dosing and chemical compatibility
- PTFE diaphragm resistance and compatibility with all chemicals
- Flow rate manual adjustment between 0÷100%
- Manul priming valve
- Wall mounting with a fiking bracket

FLOW RATE	PRESSURES	CC/IMP	CONNECTIONS	STROKES/MIN.	DIMENSIONS	PROTECTION	WEIGHT	ABSORPTION	POWER
5 l/h	8 bar	0.52	4x6	160	190,5x92x135,5	IP65	1,5 Kg	14 W	110-230 Vac

Main application

- Electroplating industry, Pickling, Degreasing and metal treatments generally
- Cooling Tower
- Potable water application
- Reverse osmosis application
- Paper industry
- Ceramic industry

Membrane Pressure Vessels

Fiberglass (FRP) Pressure Vessel Membrane Housings are available in pressure ratings up to 1200 PSI and are ideal for a variety of applications including Brackish Water, Seawater, Municipal Water Treatment, Industrial Processing, Electronics Manufacturing, Ultra – Pure Water, Food & Beverage, Automotive Application, Power Generation and Health Care.



Wave Cyber



Pressure Vessels FRP Tanks

FRP Filters and Softeners are made of composite material. A composite pressure vessel combines the unrivalled toughness of a polyethylene inner tank and the strength of a glass fiber reinforced with epoxy resin and wound on to a seamless composite liner that means a strong tank that simply cannot rust. These composite pressure vessel tanks have been designed and constructed for the needs of the commercial and industrial water treatment markets and heavy duty use.



Model	Service Flow Rate(GPM)		BackWash Flow Rate(GPM)	pipe Size(in)	Floor Space W*L (in)
	Min	Max			
FRP-1035	2	4	3	1	10*22
FRP-1054	3	5	5	1	12*22
FRP-1252	4	8	6	1	14*24
FRP-1354	5	10	8	1	15*25
FRP-1665	7	14	12	1.5	18*28
FRP-2165	13	25	23	1.5	23*33
FRP-2472	16	31	28	1.5	26*36
FRP-3072	25	50	45	1.5	32*46
FRP-3672	36	73	65	2	38*52
FRP-4272	49	98	88	2.5	44*58
FRP-4872	63	127	115	3	50*72

Automatic Valves



WS1.5 - WS2.0

Clack®



WS1 TC

Manual Valves



Filter MV 2.0



Filter MV 1.0



Softener MV 1.0

Polysulfone (PSU) or PC body, Fittings made of PVC ABS or SS Floats Capable of withstanding higher temperatures, Thread joint and panelmounted fittings are easy to install, economical and durable.



Durable Plastic Tube Type Flow Meter



Acrylic Series Flow Meter - Tube Type



Acrylic Series Flow Meter - Panel Type



TDS Digital Meter



PH Digital Meter



TDS Digital Meter



Pressure Gauges

Prime



Myron Ultrameter



TDS, PH Pen

SST & UPVC Clusters



MATERIAL	NO. OF CARTRIDGE	IN/OUT (THREAD)	FLOW (GPM)
SST 10"	304	1.5" - THREAD	21
SST 10"	304	2.0" - THREAD	42
SST 10"	304	2.0" - THREAD	63
SST 10"	304	2.0" - THREAD	84



MATERIAL	NO. OF CARTRIDGE	IN/OUT (THREAD)	FLOW (GPM)
UPVC 5D1B	5	1.5" - THREAD	8.3
UPVC 5D2B	5	1.5" - THREAD	16.5
UPVC 5D3B	5	1.5" - THREAD	24.5
UPVC 5D4B	5	1.5" - THREAD	33
UPVC 9D3B	9	3" - THREAD	44
UPVC 9D4B	9	3" - THREAD	60
UPVC B32	BAG FILTER 32"	2" - FLANGE	44
UPVC B16	BAG FILTER 16"	2" - FLANGE	88

Media



Soft Salt



Aqua Salt



Delmon Media



Jacobi Carbon



Jacobi Resin

Ultra Violet Systems



UV 1, 2, 4, 6, 12 GPM

Prime



UV 24, 36, 48 GPM

Prime

FRP Tanks Distribution Systems

Dimension:

A-250mm; B-380mm; C-88mm;
D-63dia

Diameter:

30~40" (dia 750-dia-1000mm)

Top & Bottom opening:

4~8" Thread



Thread top & bottom mount diffusers

Dimension:

A-705; B-348; C-53; D-63; E-285

Slot Size: 0.20-250.4mm

Diameter (inches/mm):

36~40" (900~1000)

Bottom opening: 4~8" thread



Dimension:

A-705; B-348; C-53; D-63; E-267; F-290

Slot Size: 0.2/0.25/0.4mm

Diameter (inches/mm):

36~40" (900-1000)

Bottom opening: 4~8" thread



Dimension:

A-825; B-416; C-53; D-63; E-303

Slot Size: 0.20-250.4mm

Diameter (inches/mm):

Bottom opening: 4~8" thread



Top Distributer 3/4



Top & Bottom Distributer 3/4

CCK 200, 300, 400 GPD

Five Stage
125 PSI Pumps
RO membranes 100 GPD
Pressure Gauge 2.5"
Free Standing Bracket
Single O Ring Housing
Quick Fitting
Made In Taiwan



Blue Tec 200, 300, 400 GPD

Five Stage
125 PSI Pumps
RO membranes 100 GPD
Free Standing Bracket
Double O Ring Housing
Jaco Fitting
Made In Taiwan



PRIME 50-75 GPD

SST Bracket
Six Stage
125 PSI Pump
Plastic Tank 5G
RO membrane 50 G
Pressure Gauge 2.5"
Free Standing Bracket
Mixing Valve
Single O Ring Housing
Chrome Faucet
jaco Fitting
One Complete Color Box
Made In Taiwan



Residential RO Systems

FILTREN UAE 50-75 GPD

Five Stage
125 PSI Pump
Plastic Tank 5G
RO membrane 75 G
Normal Flat Bracket
Mixing Valve
Single O Ring Housing
Chrome Foucet
Quick Fitting
One Complete Color Box
Made In Taiwan



NEW YORK 50-75 GPD

Six Stage
125 PSI Pump
Plastic Tank 5G
RO membrane 50 G
Pressure Gauge 2.5"
Free Standing Bracket
Mixing Valve
Single O Ring Housing
Chrome Long Foucet
jaco Fitting
One Complete Color Box
Made In Taiwan



BRAVO 50-75 GPD

Six Stage
125 PSI Pump
Plastic Tank 5G
RO membrane 50 G
Normal Flat Bracket
Mixing Valve
Single O Ring Housing
Chrome Foucet
Jaco Fitting
One Complete Color Box
Made in Taiwan



SMART 50-75 GPD

Six Stage
125 PSI Pump
Plastic Tank 5G
RO membrane 50 G
Pressure Gauge 1.5"
Free Standing Bracket
Mixing Valve
Single O Ring Housing
Chrome Faucet
Quick Fitting
One Complete Color Box
Made In Taiwan



HOT & COLD WALL MOUNTED RO 50-75 GPD

5 Stage
110 PSI Pump
In-built Tank 10L
50GPD TFC Membrane USA
Automatic Shut-off Valve
Power: 220 / 50Hz
Pre-Filters
Heater Power 550W
Quick Fitting
Hot & Cold Faucet
Made in Taiwan



WALL MOUNTED RO 50-75 GPD

6 Stage
125 PSI Pump
In-built Tank 10-12L
50GPD TFC Membrane USA
Automatic Shut-off Valve
Power: 220-230V / 50Hz
Pre-Filters
Mineral Filter
Quick Fitting
Made in Taiwan



Water Purifiers and Dispensers



WP-365

Type: Hot / Ambient / Cold Water

Tank Capacity: Hot: 5L; Ambient: 13L; Cold: 3L,

Watt: Hot: 750W, Cold: 200W

Water connection: Tap Water

Power: 110V, 60Hz; 220/240V, 50Hz

Dimension: 43x55.5x135 cm **Weight:** 41kg

RO or Filtration System: Built-in RO System

Made In Taiwan



WP-889

Type: Hot / Ambient / Cold Water

Tank Capacity: Hot: 5L; Cold: 3L;

Ambient: directly form filtration system

Watt: Hot: 750W, Cold: 200W

Water connection: Tap Water

Power: 110V, 60Hz; 220/240V, 50Hz

Dimension: 43x55x135 cm

Weight: 24Kg / 37Kg

RO or Filtration System: Built-in RO System

Made In Taiwan



CW-929

Type: Hot / Ambient / Cold Water

Tank Capacity: Hot: 2L; Cold: 2L Ambient: 10L;

Water connection: Tap Water

Power: 110V, 60Hz; 220/240V, 50Hz

RO or Filtration System: Built-in RO System

Made In Taiwan



Waterpia 1000RO

Type: Hot / Cold Water

Tank Capacity: Hot: 2L; Cold: 4L,

Watt: Hot: 470W, Cold: 90W

Water connection: Tap Water

Power: 110V, 60Hz; 220/240V, 50Hz

RO or Filtration System: Built-in RO System

Made in Korea

Family 1000L

Type: Hot / Cold Water

Tank Capacity: Hot: 2L; Cold: 4L,

Watt: Hot: 470W, Cold: 90W

Water connection: Tap Water

Power: 110V, 60Hz; 220/240V, 50Hz

RO or Filtration System: NO

Made in Korea



Family 1000S

Type: Hot / Cold Water

Tank Capacity: Hot: 2L; Cold: 4L,

Watt: Hot: 470W, Cold: 90W

Water connection: Tap Water

Power: 110V, 60Hz; 220/240V, 50Hz

RO or Filtration System: NO

Made in Korea



WP-3100

Type: Cold Water

Tank Capacity: Cold: 3L,

Watt: Cold: 160W

Water connection: Tap Water

Power: 110V, 60Hz; 220/240V, 50Hz

RO or Filtration System: NO

Made in Taiwan



WP-5064

Type: Cold Water

Tank Capacity: Cold: 1.2L,

Watt: Cold: 160W

Water connection: Bottle Water

Power: 110V, 60Hz; 220/240V, 50Hz

RO or Filtration System: NO

Made in Taiwan



C.C.K. Tower 20" 3 Stage



C.C.K. Tower 20" 2 Stage



BlueTec Tower 20" 3 Stage



BlueTec Tower 20" 2 Stage



PrimeWater Filter 10" 3 Stage



PrimeWater Filter 10" 2 Stage



PrimeWater Filter 10" 1 Stage



Cartridges



Carbon Block (CTO)



Sediment (PP)



Carbon Granuled (UDF)



Yarn



RO Tanks



RO Pumps



RO Membranes



Anti Microbiological Filter



Bio Ceramic Filter



Mineral Filter - Yellow



Magnet Filter



Mineral Filter - Blue



Post Filter

Spare Parts

Housings



C.C.K.

Housings



C.C.K.

Tubes



C.C.K.



Shower Filters



Hand Shower Filters



الهدف لتجارة أجهزة تنقية المياه (ش.ذ.م.م)
TARGET Water Purification Equipment Trading L.L.C.

TEL.: +971 4 261 4490, P.O. Box: 20483, Dubai - U.A.E.
E-mail : targetwe@eim.ae, Website: www.targetwaterpe.com